

iv) The shape of the earth is flat.

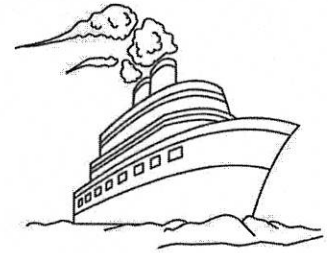
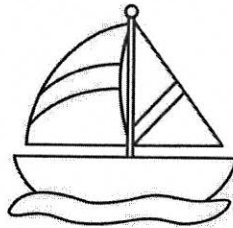
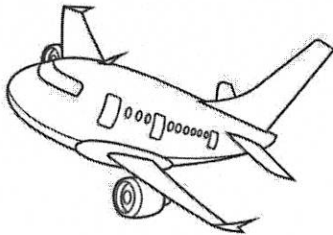
v) The fastest means of transport is aeroplane.

vi) We need air to stay alive.

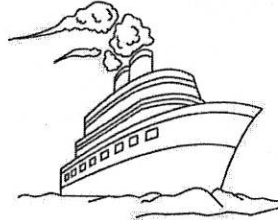
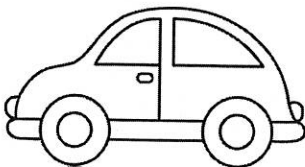
Q5. Cross the odd picture out:

(2 marks)

a)



b)



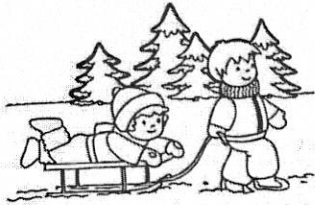
Q6. Guess the type of weather.

(4 marks)

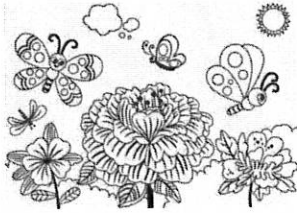
Winter	Summer	Spring	Rainy
--------	--------	--------	-------

a)

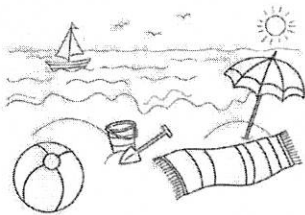




b)



c)



d)

Q7. Answer the following questions:

(6 marks)

a) Why do birds make nests?

Ans. _____

b) What are creepers?

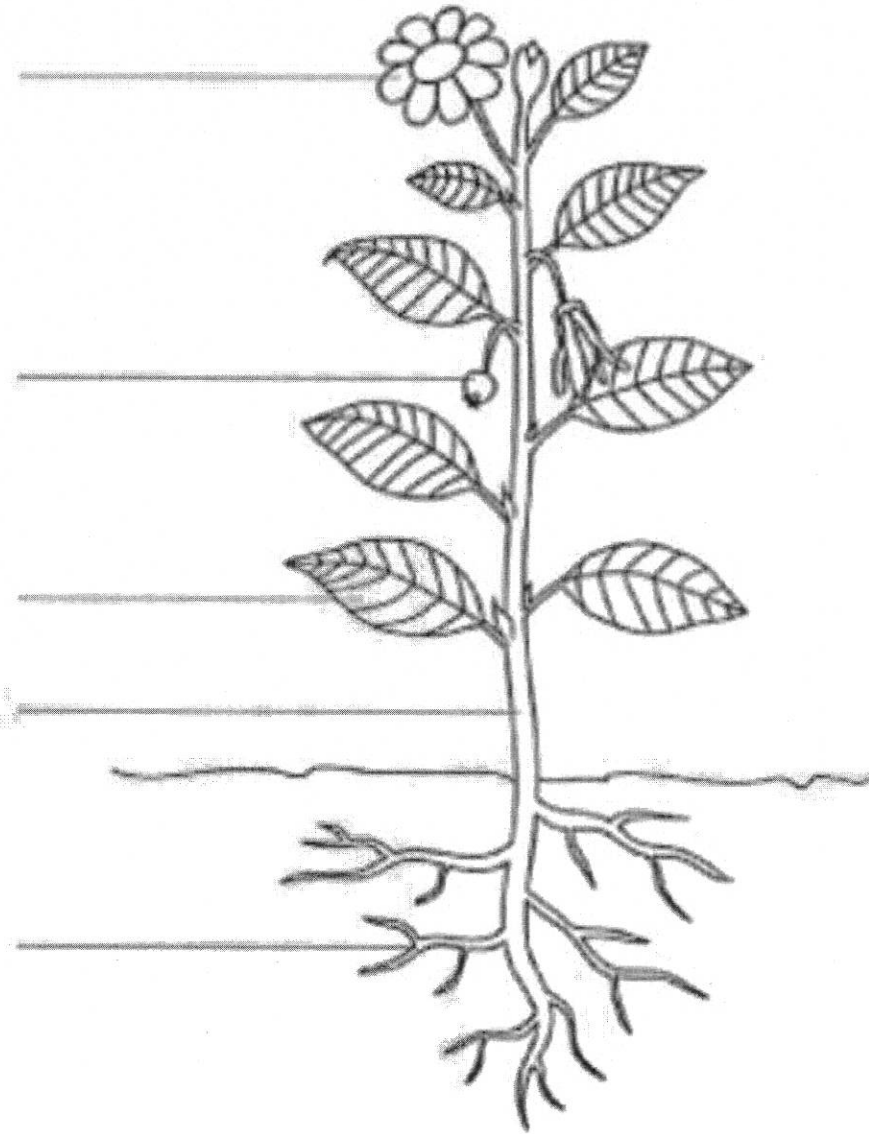
Ans. _____

c) When can we see a rainbow in the sky?

Ans. _____

Q8. Label the parts of the plant.

(4 marks)



Q9. Draw and colour it:

(2 marks)

A Land Transport

